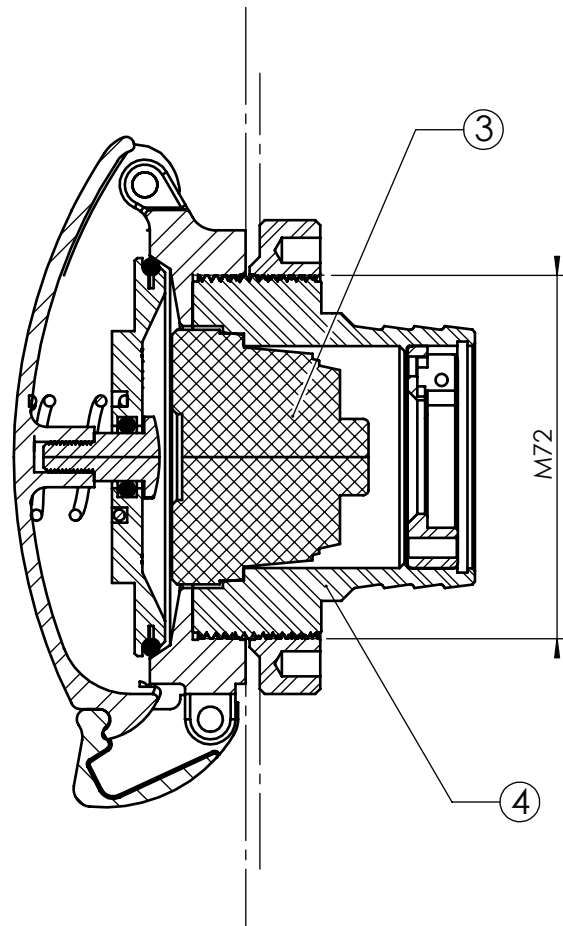
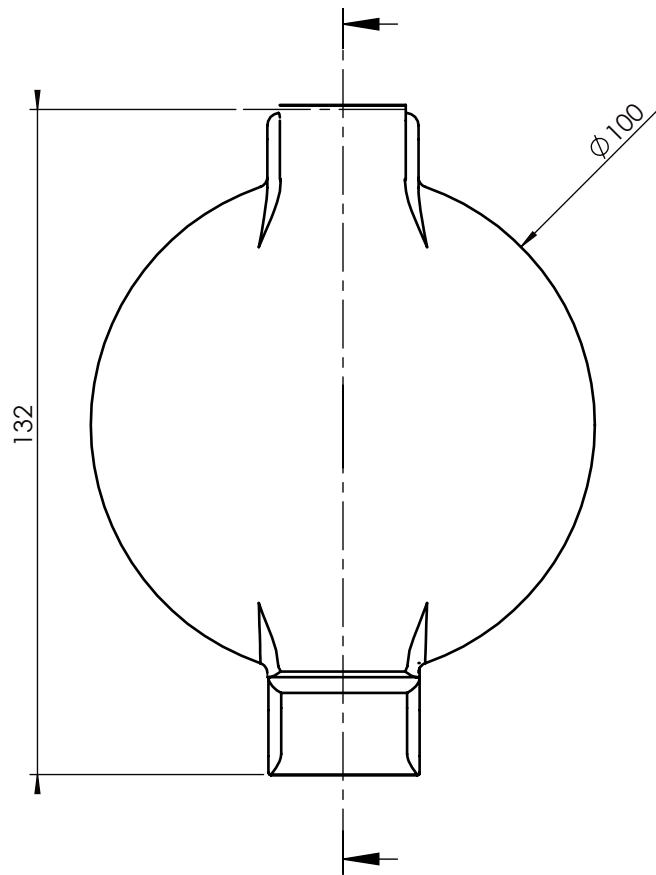
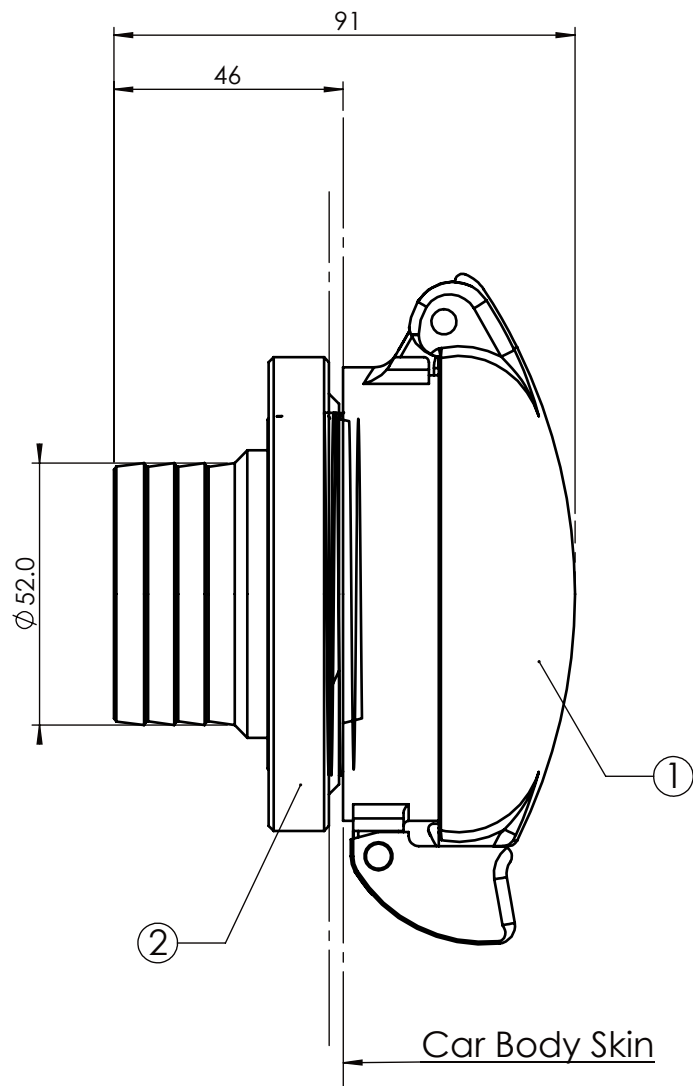


	Part Description	Comments
1	Classic 300	Polished Aluminium Finish
2	M72 - Lock Nut	Secures Cap Assy to vehicle skin. Can be tighten with peg spanner/ grip rench
3	Centre Locking Cap	-
4	M72 - Threaded Neck for 52mm (2") Hose	-

Note All dimensions are approximate



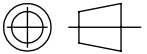
Revision

UNLESS OTHERWISE SPECIFIED:

All Dimensions in Millimeters
TOLERANCES
DECIMALS ANGULAR
X \pm 0.5 X \pm 2.0°
X.X \pm 0.25
X.XX \pm 0.10 RADIUS/
X.XXX \pm 0.01 CHAMFER: 0.5
BREAK SHARP CORNERS 0.1/0.3
FINISH: 1.6 Micro

DO NOT SCALE DRAWING

THIRD ANGLE
PROJECTION



Copyright
This drawing is for reference
only and may not be copied
in any form or be transmitted
for the purpose of
manufacture or disclosed to
any third party without written
consent from NEWTON
EQUIPMENT

SIZE

A3

REV

—

PROJECT

C30LD General
Assy

PART NO.

N/A

PRODUCT NO.

C30LD

DWG NO.

—

SCALE

SHEET

1

OF

1

NEWTON®
EQUIPMENT

DRAWN

G. Bolland

DATE

10/11/09

CHECKED

—

DATE

—

APPROVAL

—

DATE

—