



Quick Fill Range



Males Valves

Female Valves

Dispensing Tank

Handles

Quick Fill Home

[Site Map](#) | [Home](#)

[Quick Fill](#) | [Dispensing Tank](#) > QFM250TF

Specifications

| | |
|--------------------|--|
| Applications | Motor Sport |
| Materials | Aluminium Alloy |
| Finishing | Main Body Anodised Clear (silver) |
| Weight | 369.5 g |
| Fixing Arrangement | 6 Bolts Comes complete with moulded plastic fixing ring, cork gasket and screws |

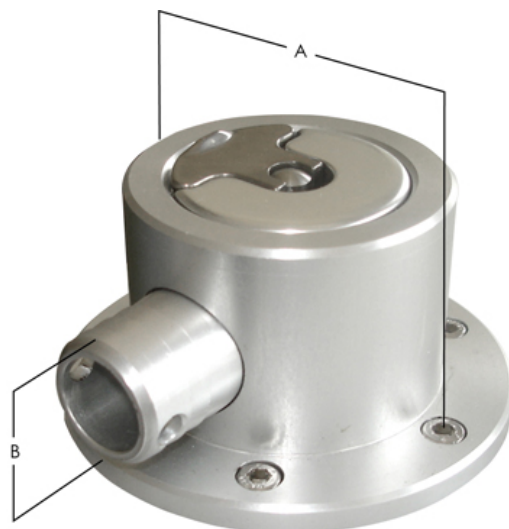
Dimensions

| | |
|-------------------------|------------------------|
| Bolt Circle A | 6 Hole 76.2 mm (3.00") |
| Nozzle Outer Diameter B | 25 mm (1") |

Type: QFM250TF

Dispensing Tank

Carboy Filler Assembly



Click below to view the Tech Specs of each type:



CAR1



QF250TNA



QFM250TF

© 2006 Newton Equipment Ltd. All Rights reserved.
[Privacy Policy](#) | [Terms and Conditions](#)