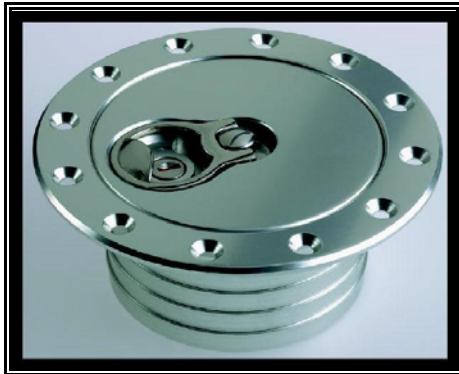


## **AERO 500 CAPS**



Aero 500 with neck and lock



Top view locking Aero 500

The 140 mm flange Aero 500 is suited to very high volume delivery of fluids with an 88 mm diameter hole once the plug has been removed. The size of this opening means that it may also be used as a “disguise” with the original filler left in place (room permitting), since you can insert a hand through the hole to undo the cap underneath.

The Aero 500 is available with or without a neck (90 mm diameter), and with or without a lock. It is of course supplied with fixing screws nuts and washers.

### **FIXING RING**

Fixing Ring **FR 512** suits all the Aero 500 caps, and is supplied with its own longer fixing screws.

### **UNLEADED PETROL**

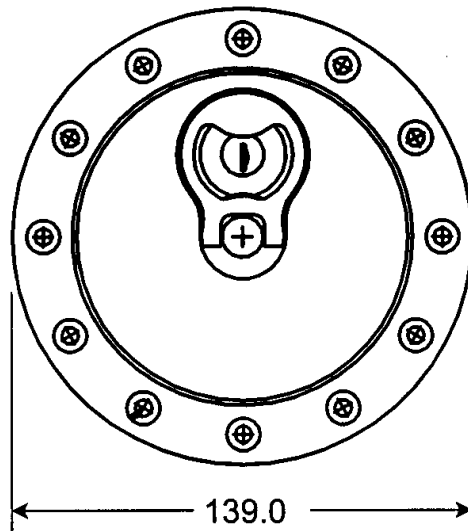
It is not possible to fit an Unleaded Petrol only restrictor flap to these caps.

### **AERO 500 CAP VARIATIONS**

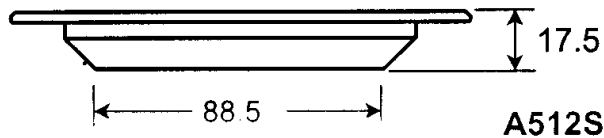
<b>PART No.</b>	<b>NECK Y/N</b>	<b>LOCK Y/N</b>
<b>A 512 L</b>	<b>No</b>	<b>Yes</b>
<b>A 512 S</b>	<b>No</b>	<b>No</b>
<b>A 512 NL 90</b>	<b>Yes</b>	<b>Yes</b>
<b>A 512 NS 90</b>	<b>Yes</b>	<b>no</b>

Detailed dimensions and specifications of the Aero 500 are on the next page.

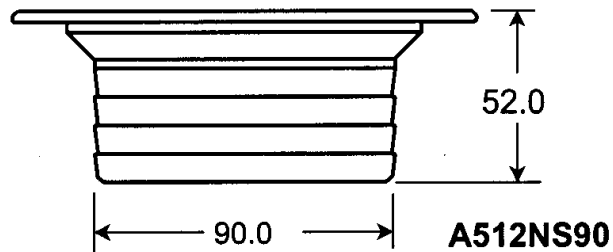
## Aero 500



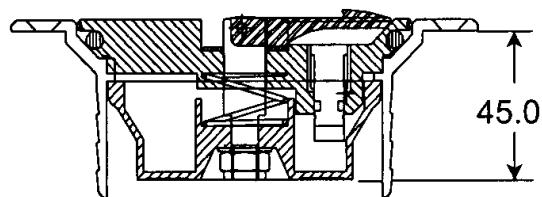
**A512S**



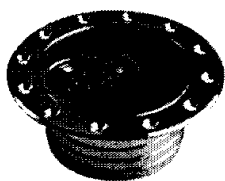
**A512S**



**A512NS90**



45.0



**A512NS90**

### Flange/Neck

- The Aero 500 range includes flange/neck version. The connecting neck is integral with the flange allowing remote connection for the filler.