
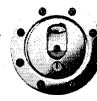




# AERO 400 CAPS

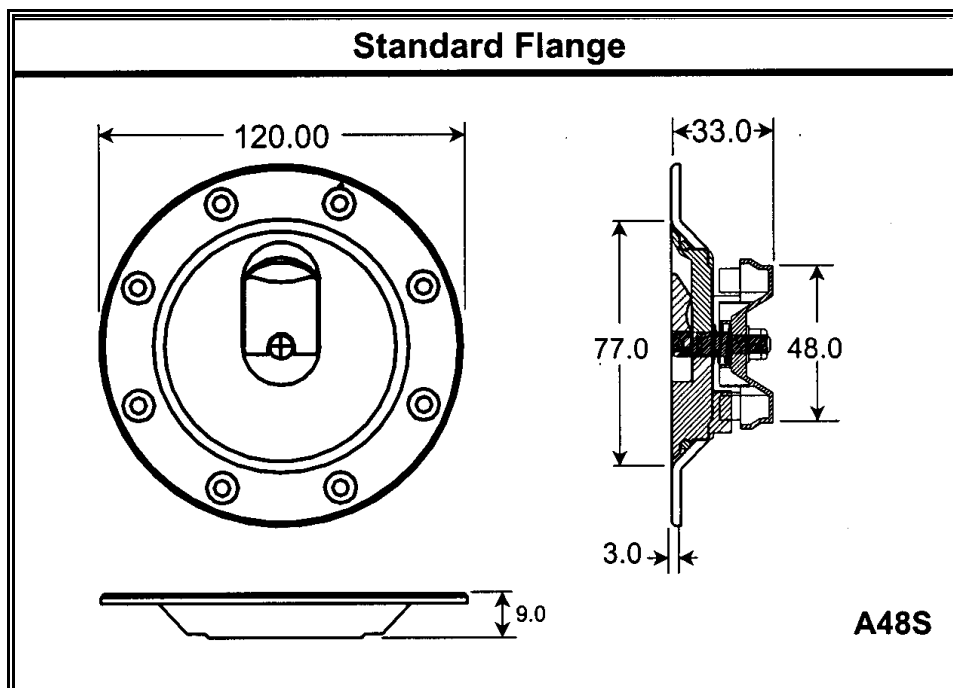
The 140 mm Flange Diameter Aero 400 range provides a larger flange and a larger centre hole. A wide range of optional accessories, including necks, fixing rings and a spill tray make this a truly versatile cap. All are supplied with Fixing Screws. The Aero 400 with neck is now a bevelled edge cap, no longer flat, with recessed screw holes for that “macho” look. It stands about 3 mm proud of the surface

<b>Applications</b>		<b>Materials</b>	
Fuel, oil & water tanks		Centre Forging - Aluminium Alloy 6063	
<b>Features</b>		Flange - 6082 T6	
Fixing Holes: 8 x 5 mm csk		Neck - 6082 T6	
Bolt Circle: 101.6 mm 4.00 inches		* D: Aluminium / P: Steel	
<b>Weight</b>		<b>Finish</b>	
A48S:	176 g	Anodised Clear (Silver)	
CN4850:	240 g		
A48NS50: 420 g (complete assy)		<b>All dimensions are in Millimetres</b>	

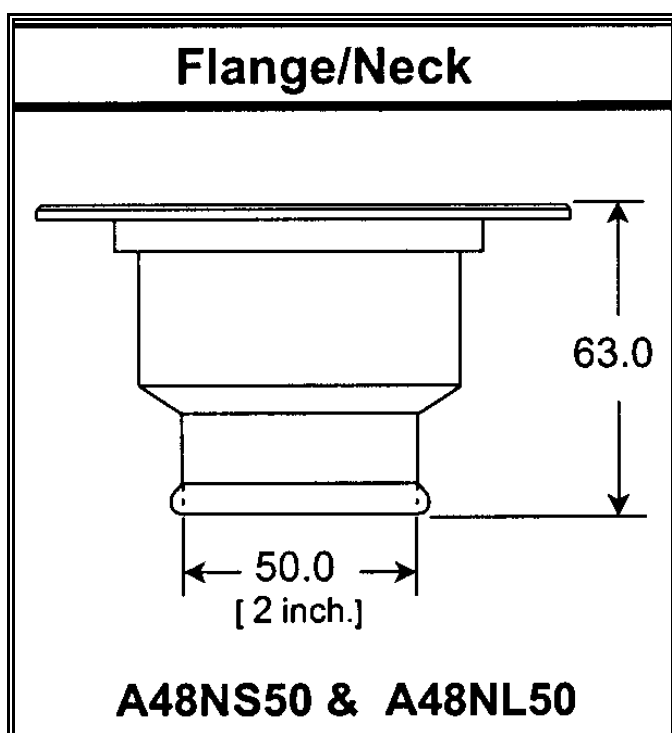
	<b>Connecting necks</b> The Aero 400 range has also connecting necks as separate parts, available in 50 mm (2") and 57 mm (2.25") outlets.	
CN4850		A48L

	<b>Fixing rings</b> When access to the rear of a panel is restricted the fixing ring will be beneficial. Fixing rings can be specified for all Aero filler caps, as an optional extra.	
		<b>Gaskets</b> All flange type filler caps are supplied with gaskets. They are available in nitrile or bonded cork.

## AERO 400 SPECIFICATIONS



BASIC AERO 400 CAP, WITHOUT LOCK OR NECK



**AERO 400 INTEGRAL FLANGE & NECK,  
(NOW BEVELLED EDGE, NOT FLAT)**



View showing new bevelled top

### **UNLEADED PETROL**

The versions of the Aero 400 cap with an integral neck may be converted to Unleaded Petrol use by installing the optional restrictor flap ULP1.

### **AERO 400 VARIATIONS**

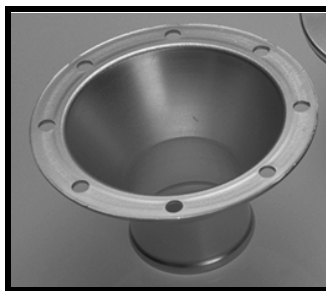
<b>PART NO.</b>	<b>NECK Y/N</b>	<b>LOCK Y/N</b>	<b>ULP FLAP Y/N</b>
<b>A48 L</b>	<b>No</b>	<b>Yes</b>	<b>No</b>
<b>A48 S</b>	<b>No</b>	<b>No</b>	<b>No</b>
<b>A48 NL50</b>	<b>Yes</b>	<b>Yes</b>	<b>Optional</b>
<b>A48 NS50</b>	<b>Yes</b>	<b>No</b>	<b>Optional</b>

## SEPARATE NECKS FOR 400 SERIES CAPS

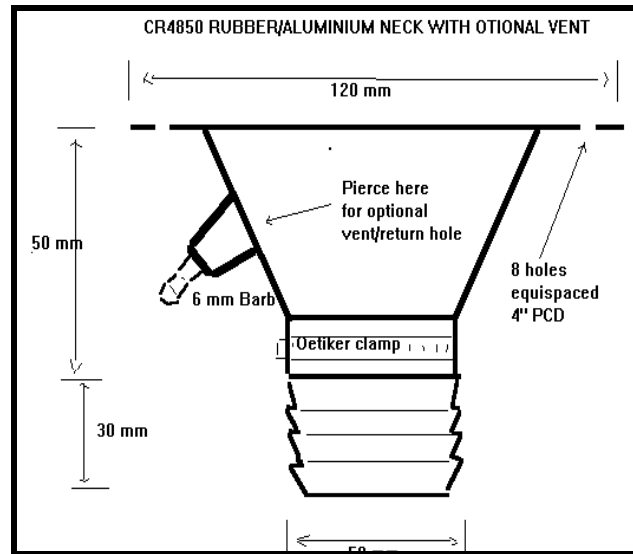
These necks share the same 8 bolt mounting pattern as the A48S and A48L caps and are fitted behind the panel, sharing the same cap mounting screws and nuts as the cap. In the case of rubber and aluminium necks CR4850 AND CR4850ULP we **strongly recommend** the use of Fixing ring FR48 to clamp the rubber against the bodywork.



**CR4850 NECK**



**CN4850 NECK**



**CR4850 & CR 4850ULP NECKS**

**CN4850** Aluminium neck to take 50 mm (2.0 inch) connecting Hose

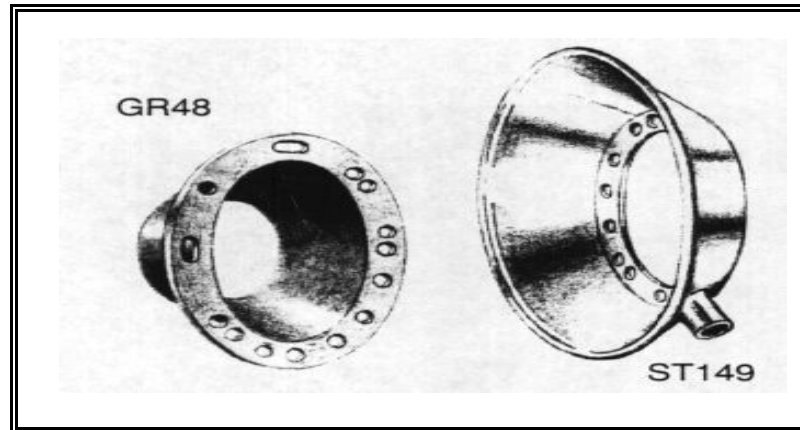
**CN4857** Aluminium neck to take 57 mm (2.25 inch) connecting Hose

**CR4850** Rubber & Aluminium neck to take 50 mm (2.0 inch) Hose

**CR4850ULP** Rubber & Aluminium neck to take 50 mm (2.0 inch) Hose  
May also be fitted with ULP only restrictor flap.

**NOTE.** Both CR4850 and CR4850ULP have the capability of being **VENTED**. To vent these necks it is merely necessary to drill through the rubber where the 6 mm barb nipple is embedded and connect a suitable vent line.

## OPTIONAL EXTRAS FOR AERO 400 CAPS



**GASKET GR48 & TRAY ST149**

### **SPILL PART 149**

### **TRAY No. ST**

The rubber Spill Tray **ST149** may be used with either A48S or A48L when mounting them directly to a tank top. The tray collects splashed fuel and allows it to drain away harmlessly through a drain pipe (not supplied with tray) to the exterior of the vehicle.

### **RUBBER GASKET PART No. GR 48**

**GR48** is a funnel shaped rubber gasket for use with 400 series caps. The neck of the funnel seals against the saddle of the cap.

### **FIXING RING PART No. FR 48**

This fixing ring suits all Aero 400 caps, and is supplied complete with its own longer fixing screws. It is **HIGHLY RECOMMENDED** that you use the ring when fitting the rubber neck CR4850.