

# FUEL PUMPS

## D2035-A



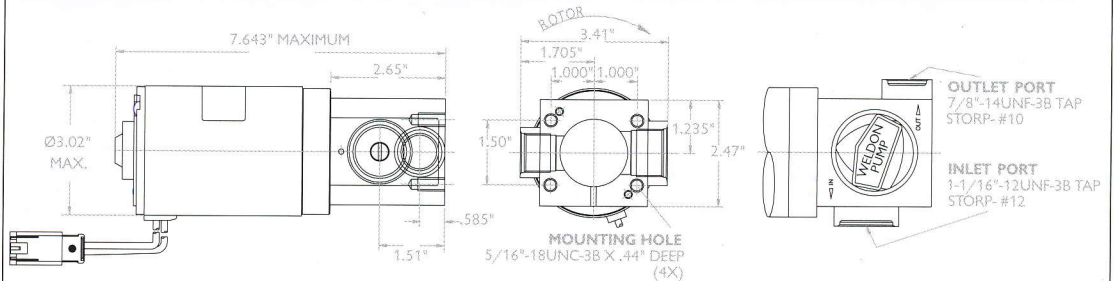
Ideal Pump for most Heads-up 10.5 classes where power-adders are used

(-12 inlet and -10 outlet) Intermittent Duty

### Maximum Horsepower

1800 hp @ 14V, EFI and Carb engines (900 hp on Methanol)

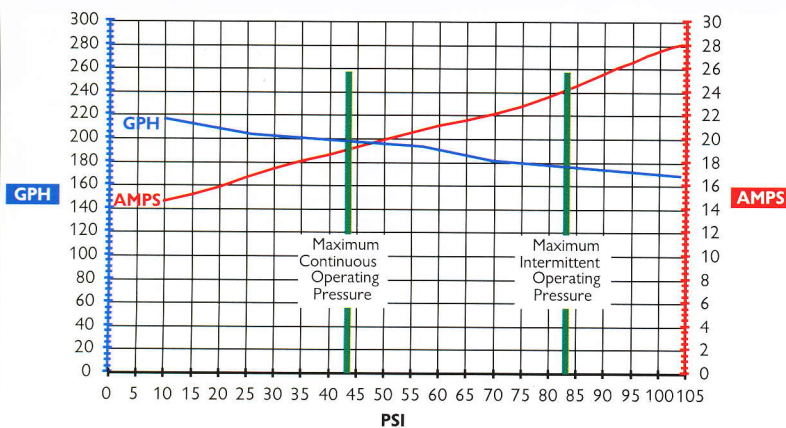
### Dimensions



### Features

- All billet pumps are 100% serviceable/repairable
- Self Priming
  - Pump may be mounted above fuel cell
  - Vertical or horizontal mount
- Breakaway coupling prevents pump/motor damage in the event of contamination, see pg 17
- All internal wear components are 100% metallic
  - No plastics or composite materials. Our internal pumping elements are made of high speed tool steel and bronze. This results in the longest lasting, highest quality, most durable pumps available.
- Body machined from billet aluminum
- For carbureted and injected engines
- Provides Consistent Performance with no fall-off in flow
- Precise fuel delivery
- Blades self-compensating for wear
- 5.5 lbs

### D2035-A Series @ 14 VDC on gasoline



Each Weldon Pump is shipped with a unique serial number and performance chart

### Current Fluids

Weldon Pumps offer the widest range of fuel compatibility.

- Gasoline
- Methanol
- Nitro methane
- Diesel
- Ethanol
- All racing fuels

### Comments

Requires appropriate bypass regulator, a -8 return line at a minimum is recommended. See pg 14

### Compatible Weldon Pump Products



2046 Blocking Regulator, Pg 14



A2040 Bypass Regulator, Pg 14



2047 Bypass Regulator, Pg 14

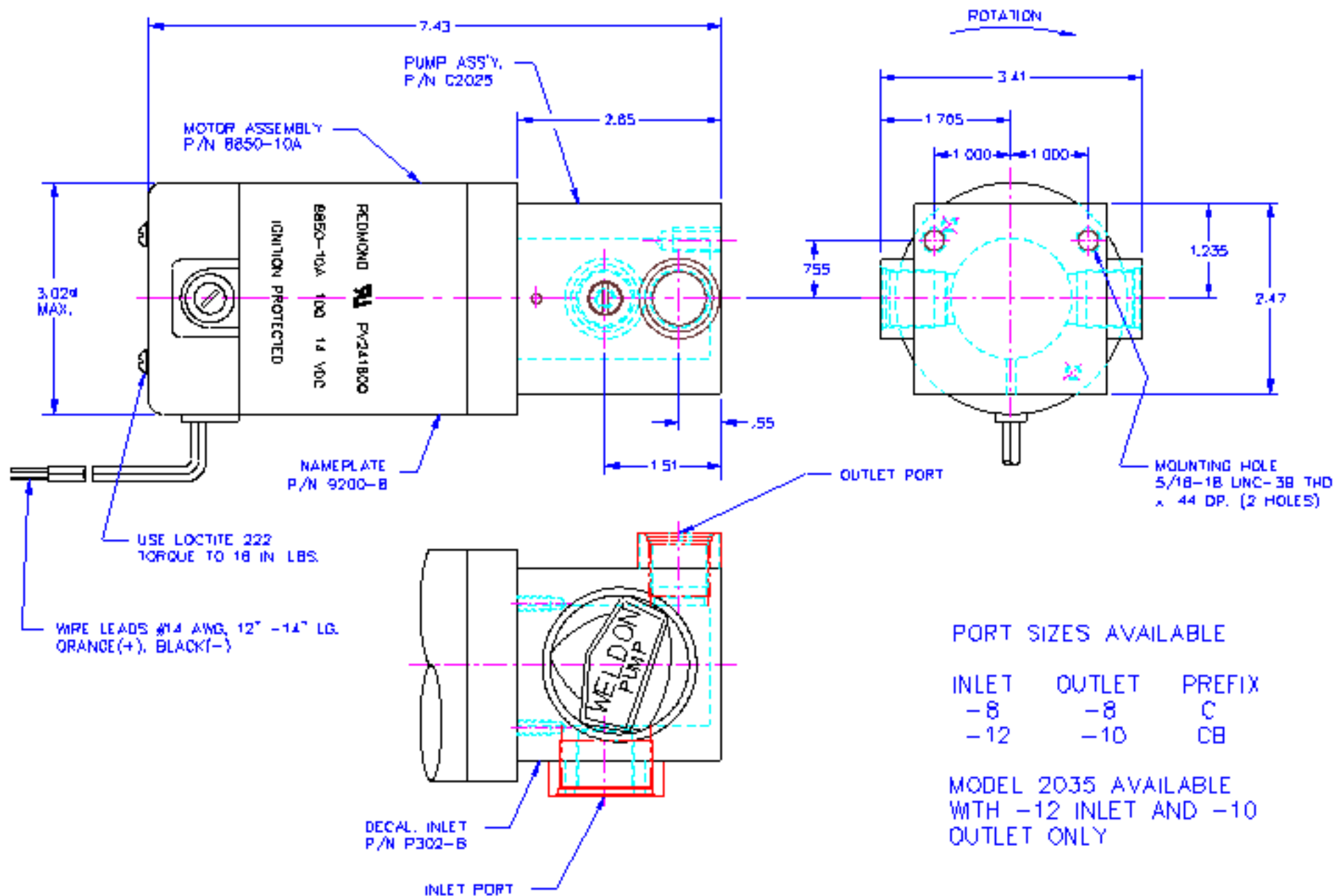


40 & 10 Micron Filters, Pg 15



O-ring Kit & Coupling Kit, Pg 17

- We offer free expert fuel system consultation
- We can design a custom pump for your application if your requirements are not listed in this catalog. Call or e-mail to discuss!



PORT SIZES AVAILABLE

INLET	OUTLET	PREFIX
-8	-8	C
-12	-10	CB

MODEL 2035 AVAILABLE  
 WITH -12 INLET AND -10  
 OUTLET ONLY