

Ideal pump for NSCA, NMCA, NMRA, PSCA "Small-Tire" classes, Street/Strip, Outboard Drag Boats and Off-Shore Powerboats



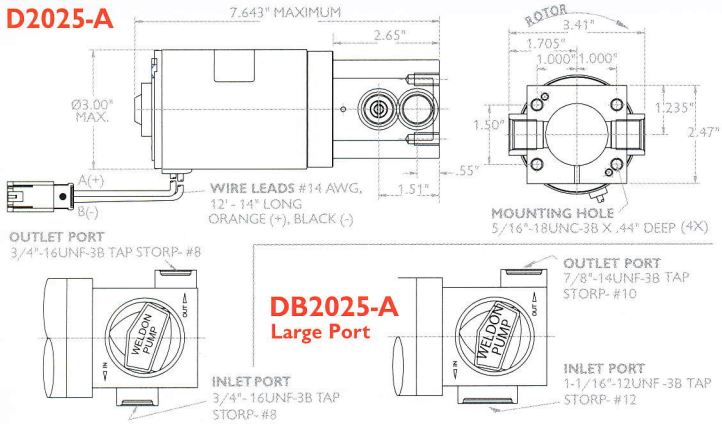
# D2025-A / DB2025-A

(-8 Inlet and Outlet) ( -12 Inlet and -10 Outlet)

**USCG APPROVED FOR MARINE USE!**

## Dimensions

### D2025-A



• The prefix **D** represents smaller ports. Ideal for road racing

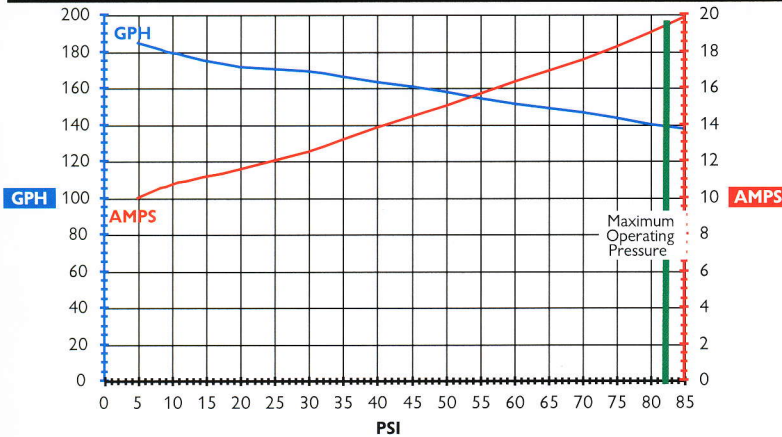
• The prefix **DB** represents larger ports. Ideal for Street/Strip or drag racing

## Maximum Horsepower

- 1400 hp @ 14V EFI (700 hp on Methanol)
- 1600 hp @ 14V Carb (800 hp on Methanol)



## 2025 Series @ 14VDC on gasoline



## Features

- All billet pumps are 100% serviceable/repairable
- Self Priming
  - Pump may be mounted above fuel cell
  - Vertical or horizontal mount
- Breakaway coupling prevents pump/motor damage in the event of contamination, see pg 17
- All internal wear components are 100% metallic
  - No plastics or composite materials. Our internal pumping elements are made of high speed tool steel and bronze. This results in the longest lasting, highest quality, most durable pumps available.
- Body machined from billet aluminum
- For carbureted or injected engines
- Provides Consistent Performance with no fall-off in flow
- Precise fuel delivery
- Blades self-compensating for wear

## Current Fluids

Weldon Pumps offer the widest range of fuel compatibility.

- Gasoline
- Methanol
- Nitro methane
- Diesel
- Ethanol
- All racing fuels

## Comments

Requires appropriate bypass regulator, a -8 return line at a minimum is recommended. See pg 14

## Compatible Weldon Pump Products



14000 Pump Controller, Pg 13



2046 Blocking Regulator, Pg 14



A2040 Bypass Regulator, Pg 14



40 & 10 Micron Filters, Pg 15



O-ring Kit & Coupling Kit, Pg 17

**WELDON RACING PUMPS**

Ph: 440.232.2282

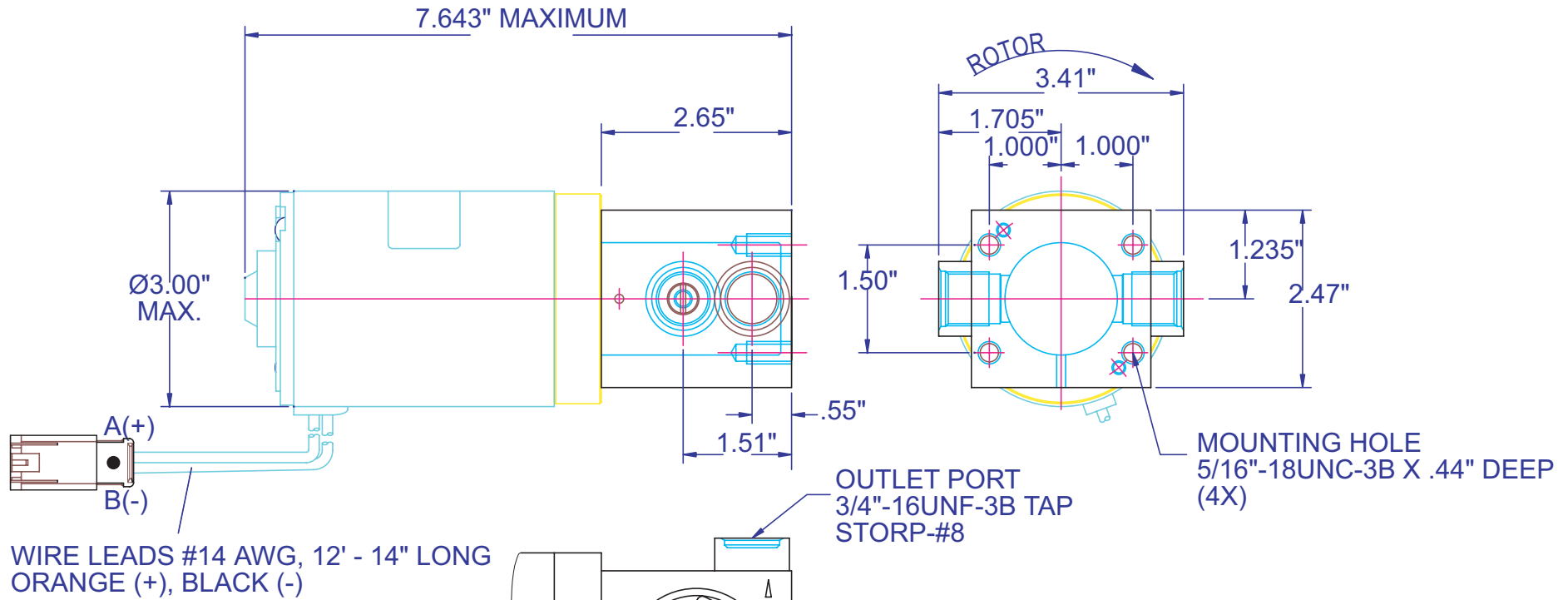
Fax: 440.232.0606

E-mail: request@weldonpumps.com

www.weldonracing.com

640 Golden Oak Parkway • Oakwood Village, Ohio 44146 U.S.A

# D2025-A



# DB2025-A

Large Port

