

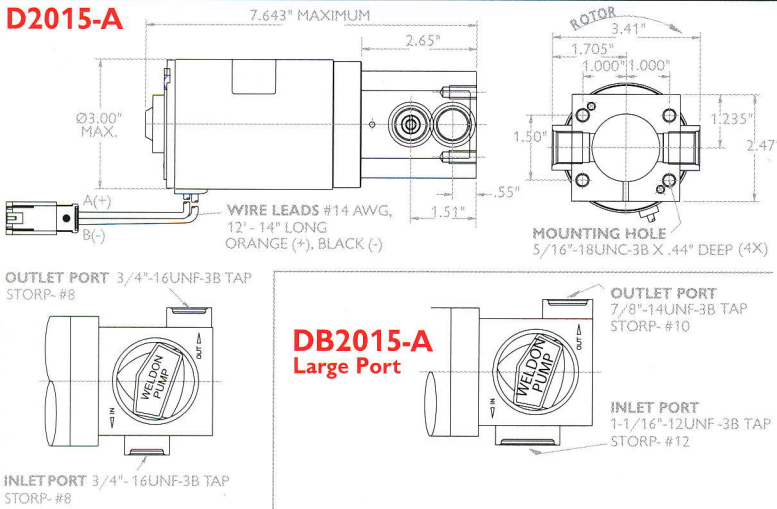
This pump is ideal for
Hi-performance EFI
Street/Strip cars



D2015-A / DB2015-A

(-8 Inlet and Outlet) (-12 Inlet and -10 Outlet)

Dimensions



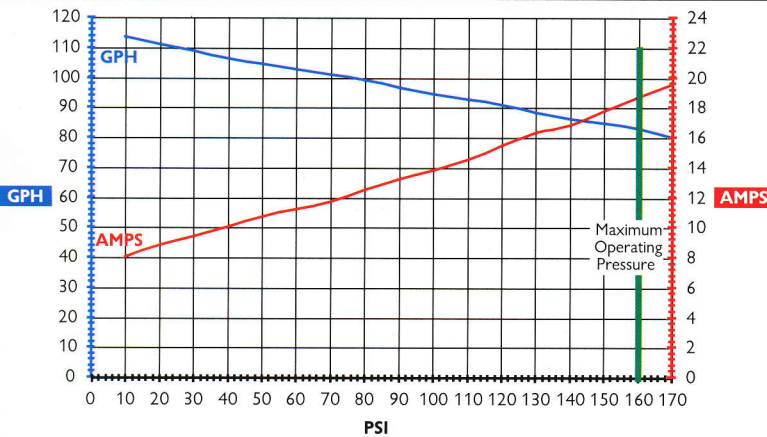
- The prefix **D** represents smaller ports. Ideal for road racing
- The prefix **DB** represents larger ports. Ideal for Street/Strip or drag racing

Maximum Horsepower

- 1000 hp @ 14 V EFI (500 hp on Methanol)
- 1050 hp @ 14 V Carb (525 hp on Methanol)



2015 Series @ 14 VDC on gasoline



Features

- All billet and cast body pumps are 100% serviceable/repairable
- Self Priming
 - Pump may be mounted above fuel cell
 - Vertical or horizontal mount
- Breakaway coupling prevents pump/motor damage in the event of contamination, see pg 17
- All internal wear components are 100% metallic
 - No plastics or composite materials. Our internal pumping elements are made of high speed tool steel and bronze. This results in the longest lasting, highest quality, most durable pumps available.
- Body machined from billet aluminum
- For carbureted or injected engines
- Provides Consistent Performance with no fall-off in flow
- Precise fuel delivery
- Blades self-compensating for wear
- 5.5 lbs

Current Fluids

- Weldon Pumps offer the widest range of fuel compatibility.
- Gasoline
 - Methanol
 - Nitro methane
 - Diesel
 - Ethanol
 - All racing fuels

Comments

Requires appropriate bypass regulator, a -6 return line at a minimum is recommended. See pg 14

Compatible Weldon Pump Products



14000 Pump Controller, Pg 13



2046 Blocking Regulator, Pg 14



A2040 Bypass Regulator, Pg 14



40 & 10 Micron Filters, Pg 15



O-ring Kit & Coupling Kit, Pg 17

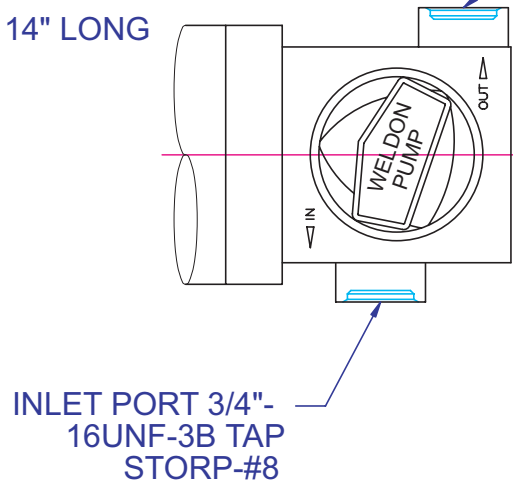
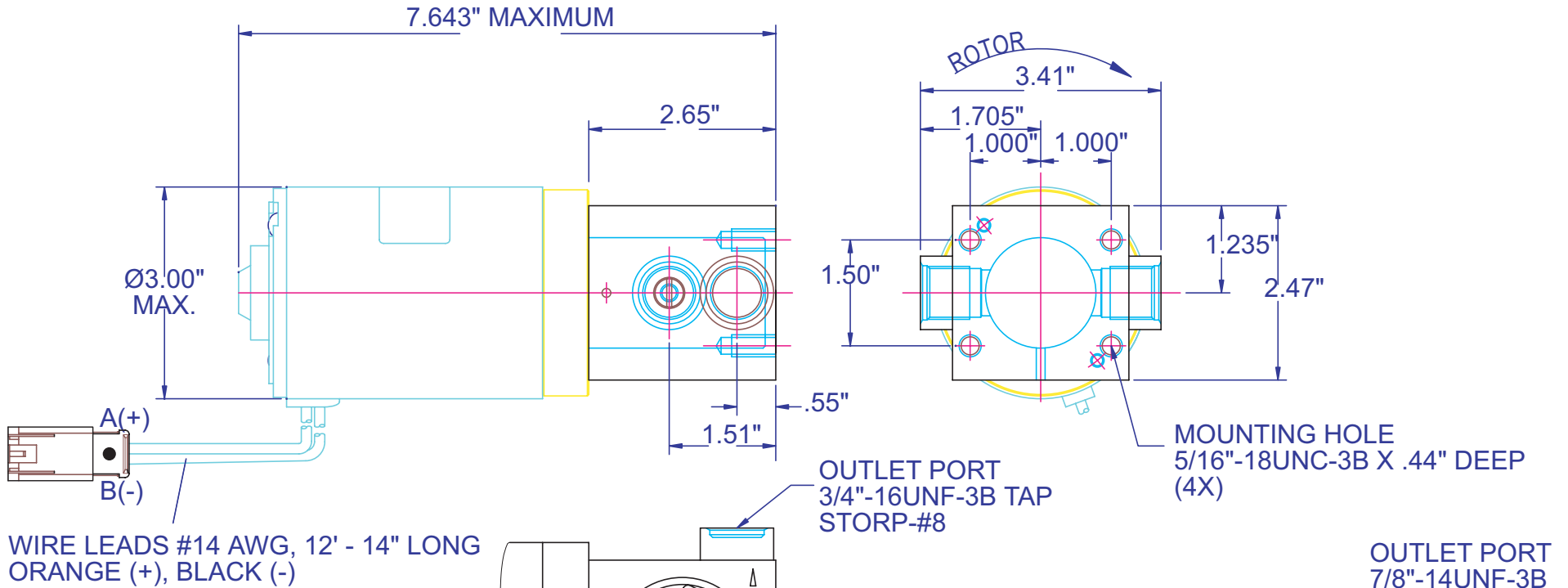


Ph: 440.232.2282
Fax: 440.232.0606

E-mail: request@weldonpumps.com
www.weldonracing.com

640 Golden Oak Parkway, Orem, UT 84057, USA

D2015-A



DB2015

