

4

3

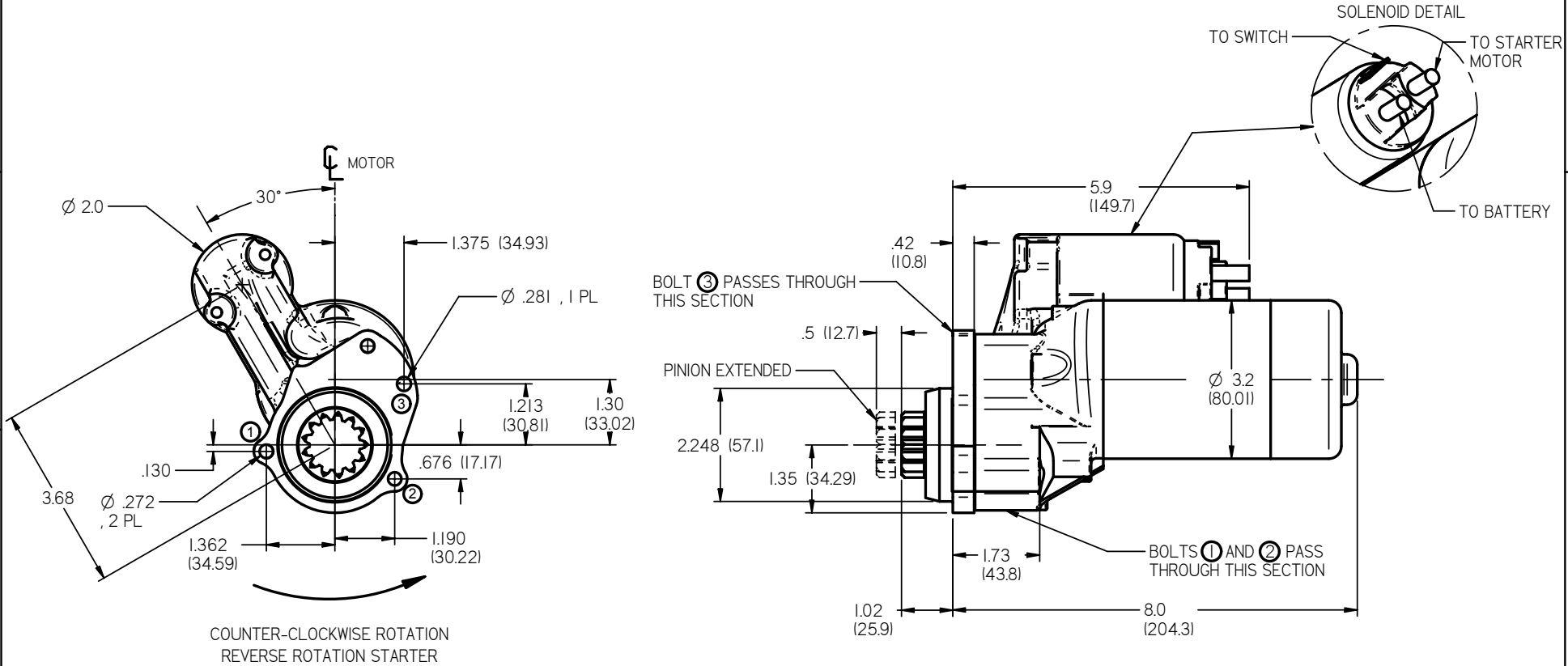
2

1

ZONE	CHKD	DATE	REV	ECN	CHANGE OR ADDITION
ALL	BMR	07/15/02	A		CHANGED TO SOLID MODEL

This document contains proprietary information of TILTON ENGINEERING, INC. and its receipt or possession does not constitute an offer of any product or service. Reproduction, manufacture, use or selling anything in any descriptive, disclosure, or use without specific written authorization of TILTON ENGINEERING INC. is strictly forbidden.

**TILTON ENGINEERING**



## NOTES:

- PINION, 13 TEETH, 12/14 PITCH
- TYPICAL CURRENT DRAW = 250-300 AMPERES (LOAD DEPENDENT)
- WEIGHT OF STARTER WITH TYPICAL NOSE; 11.2 LBS / 5.0 kg
- CHECK FOR .030/.010" (.76/.25mm) BACKLASH BETWEEN THE PINION AND THE RING GEAR
- SET STARTER PINION WHEN AT REST .100 +/- .040" (3.56/1.52 mm) FROM RING GEAR
- PINION GEAR HAS A 13.8 TOOTH PITCH CIRCLE DIAMETER, 1.150" (29.21 mm)

DIM: IN (mm)

TILTON ENGINEERING, INC.

FAX 805/688-2745

25 EASY STREET, P.O. BOX 1787, BUELLTON, CA 93427 805/688-2353

TITLE:

SEVERE DUTY SUPER STARTER  
52 SERIES HOUSING, WITH 54-073 NOSE

DRAWN BY	ROBINSON	CHKD	SCALE	1 : 2	DWG. 3940
P/N	54-21062	DATE	07/15/02	SHEET 1 OF 1	