

# WRENCHING & CUTTING TOOLS

## COMPONENTS AND ACCESSORIES

### HOSE END WRENCHES

THESE WRENCHES ARE specifically designed for use with Earl's fittings and hose ends. The short handles allow usage in cramped areas and discourages over-tightening. Color coded for quick size identification. Reduces damage to aluminum.

PART NO.	HEX SIZE	NUT SIZE	COLOR
230406ERL	11/16	6 Nut	Black
230408ERL	7/8	8 Nut	Blue
230410ERL	1"	10 Nut	Purple
230412ERL	1-1/4	12 Nut	Red
230416ERL	1-1/2	16 Nut	Bronze
230420ERL	1-13/16	20 Nut	Gold
230402ERL	Set of all six		



### DOUBLE-ENDED HOSE END WRENCHES

DOUBLE-ENDED wrenches make it easier than ever to assemble Earl's hose and hose ends correctly without damaging ends. Finished in anodized color coded aluminum. Pick up a complete set for your tool box today.

PART NO.	HEX SIZE	FITS	COLOR
230405ERL	9/16x1/2	4 nut - 3 nut	Natural
230407ERL	11/16x5/8	6 nut - 4 socket	Black
230409ERL	7/8x3/4	8 nut - 6 socket	Blue
230411ERL	1x7/8	10 nut - 8 socket	Purple
230413ERL	1-1/4x1-1/16	12 nut - 10 socket	Red
230415ERL	1-1/2x1-3/16	16 nut - 12 socket	Bronze
230419ERL	2"x1-7/16	20 nut - 16 socket	Gold
230401ERL	Set of all seven		



### ULTRA-FLEX™ HAND HELD HOSE CUTTER

Stop wasting time and material with jagged or angled cuts on your hose assemblies. This hose cutter puts precision accuracy in the palm of your hand. The special v-block ensures a straight clean cut every time. This hand held cutter will cut Earl's Super Stock™, Pro-Lite 350™ and even our new Ultra-Flex 650™ Kevlar hose. This tool weighs only 12 oz. and the best part is that the blade is dual functioning. When one edge becomes dull simply rotate the blade and you have a fresh blade ready for hundreds of cuts.

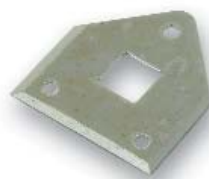
D022ERL



### ULTRA-FLEX™ REPLACEMENT HOSE CUTTER BLADE

Earl's also carries a 5 blade (10 with rotation) replacement set.

D023ERL



**NEW!**